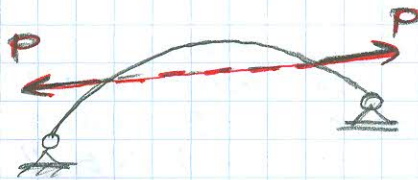
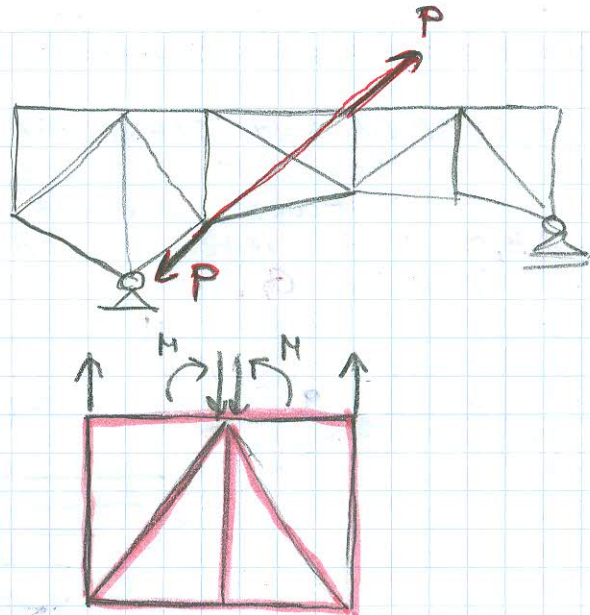


PROSTA GREDA

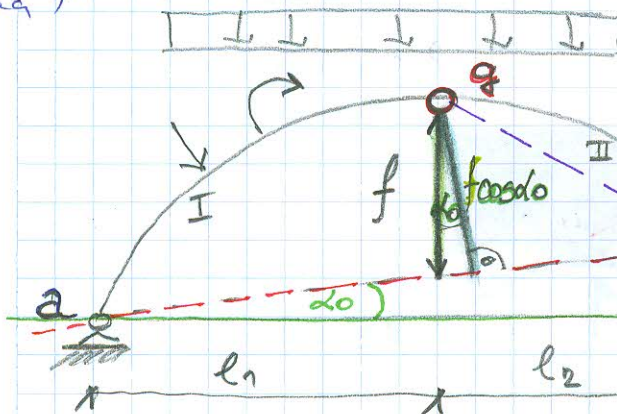


- 1) IMAM JEDNAKU OPTER. U ISTOM PRAVCU, SUPROTNOG SMERA, PA SE P I P PONISTAVA, PA JE GREDA NEOPTEREĆENA

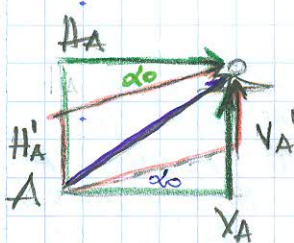


LUK NA TRI ZGLOBA SA REALNIM ZGLOBOM

(83 str zelena)



UVEK POČINJEM OD PLOŠE KOJA JE MANJE OPTEREĆENA (OVDE JE TO PLOŠA II)



$$H_A = H_A' \cos \alpha$$

$$V_A = V_A' + H_A' \tan \alpha$$

$$(H_A' \sin \alpha)$$

$$H_B = H_B' \cos \alpha$$

$$V_B = V_B' - H_B' \tan \alpha = V_B' - H_B' \sin \alpha$$

$$\frac{\alpha}{H_B} = \frac{x}{H_B}$$

$$\tan \alpha = \frac{x}{H_B}$$

$$\rightarrow x = H_B \tan \alpha$$

\* OBE PLOŠE SU OSLOŃENE NA DVA OSLOŃCA



$$(1) \sum M_A = 0 \Rightarrow V_B'$$

$$(2) \sum M_C = 0 \Rightarrow M_P + V_B' \cdot l_2 - H_B' \cdot f \cos \alpha = 0 \quad H_B' \cos \alpha = H_B \Rightarrow H_B$$

$$V_B = V_B' - H_B \cdot \tan \alpha$$

$$(3) \sum V = 0 \Rightarrow V_A$$

$$(4) \sum H = 0 \Rightarrow H_A$$