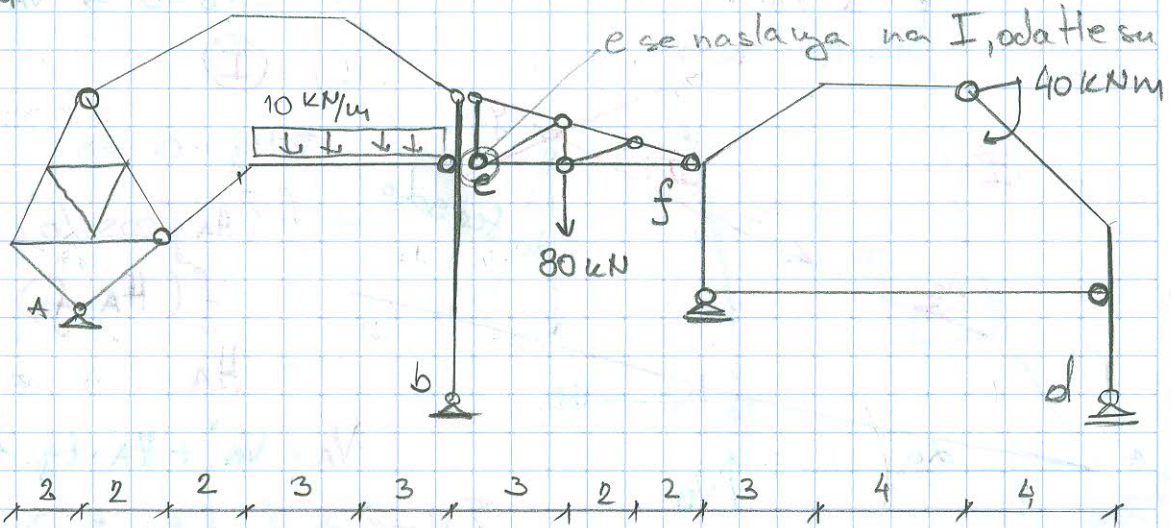
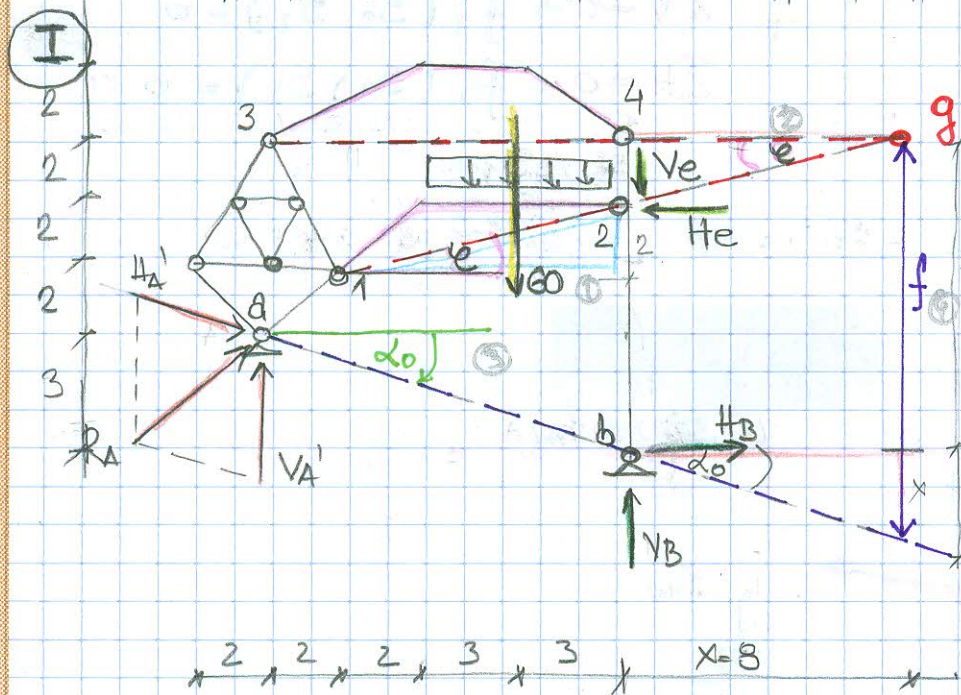


ZADATAK 1. NACRTATI DIJAGRAME SILA U PRESECIMA NA PUNOM DELU NOSACA

I - LUK SA IMAGIN. ZGLOBOM



2 ispor
2 II
2 pa se
2 sa je
2 wo
2 wa dr
2 preos
2 reakc



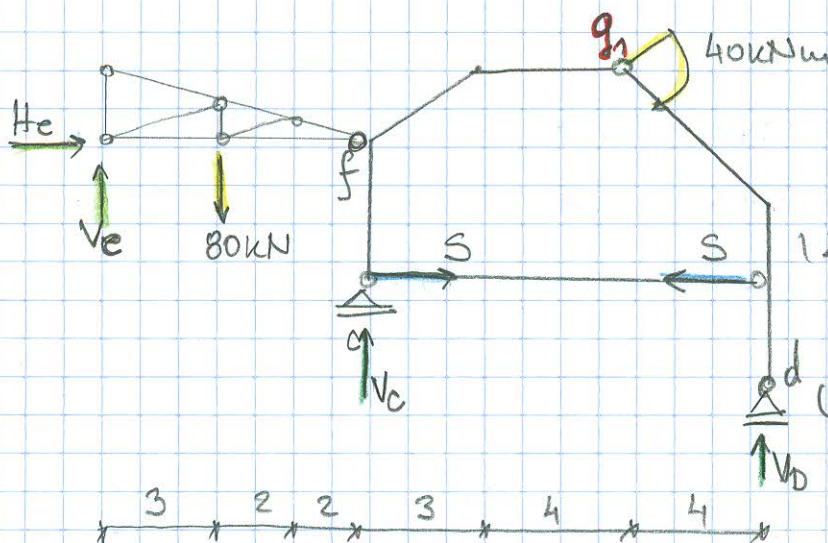
$$\tan \alpha = \frac{2}{8} = \frac{2}{x} \Rightarrow x = 8$$

$$\tan \alpha_0 = \frac{3}{10}$$

$$f = 9 + 8 \cdot \tan \alpha_0 = 11,4 \text{ m}$$

* posto nemam pravi zglob
pravim imaginarni u
odnosu na uoči
racunam reakcije
A-B

II



$$(1) \sum M_f^L = 0$$

$$7V_e - 80 \cdot 4 = 0 \Rightarrow V_e = \frac{320}{7} = 45,7143$$

$$(2) \sum M_d^L = 0$$

$$11V_d - 40 = 0 \Rightarrow V_d = \frac{40}{11} = 3,63$$

$$(3) \sum V = 0$$

$$V_e - 80 + V_c + V_d = 0$$

$$V_c = 80 - V_d - V_e = 30,6494 \text{ kN}$$

$$(4) \sum H = 0 \Rightarrow H_e = 0$$