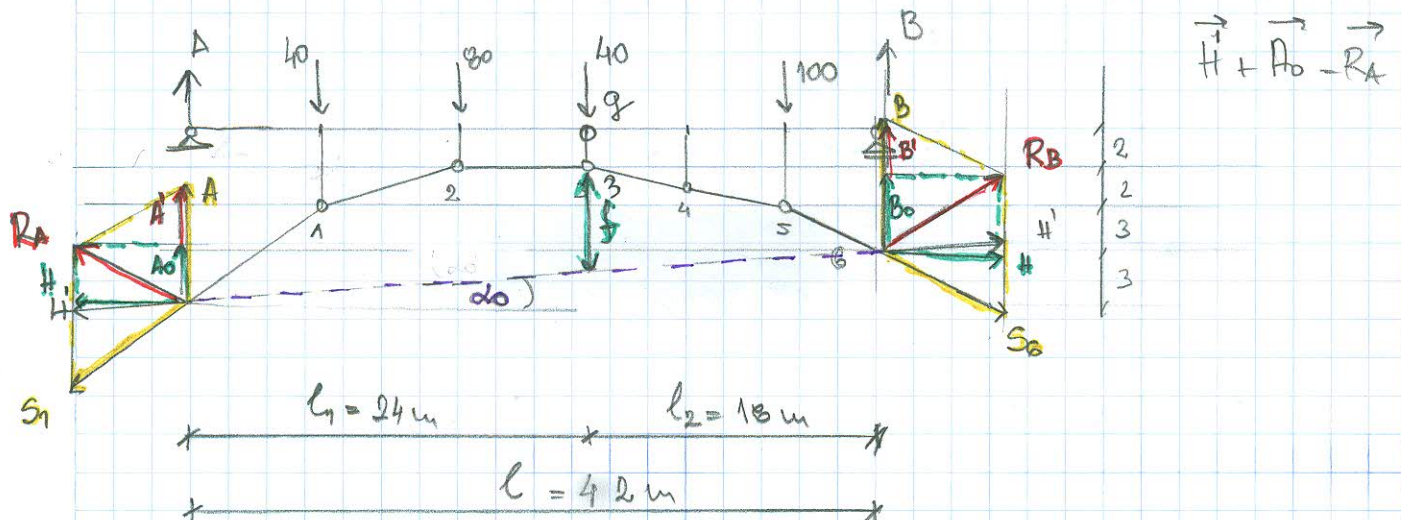
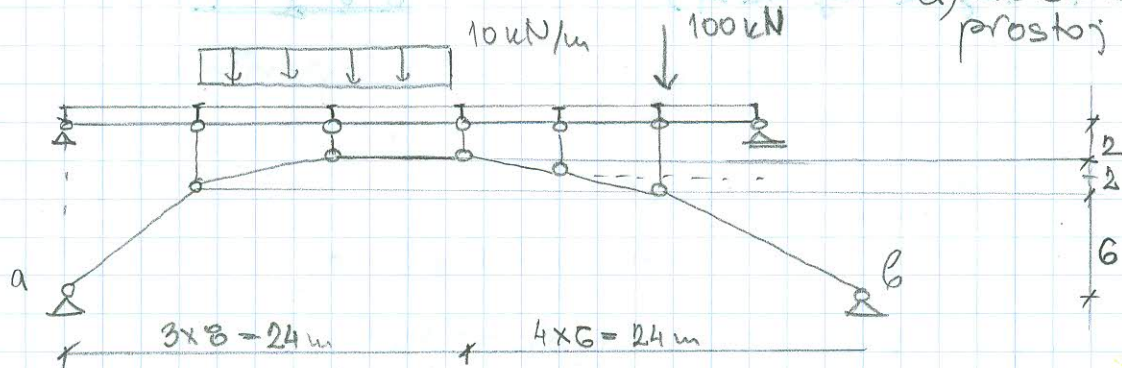


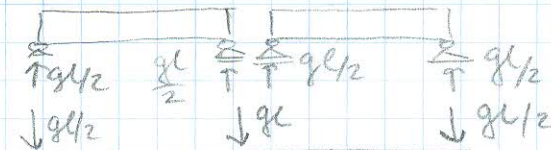
- * ZA DATI POSREDNO OPTEREĆEN NOSAČ SRAČUNATI I NACRTATI:
 a) DIJAGRAME SILA U PRESECIMA USLED ZADATOG OPTEREĆENJA
 b) DIJAGRAME EXTREMNIH VREDNOSTI TRANSVERZALNIH SILA NA DELU NOSAČA A-B USLED JEDNAKOPODELENOG OPTEREĆ. POKRETNOG $p = 18 \text{ kN/m}$

a) nacrtam na prostoj gredi

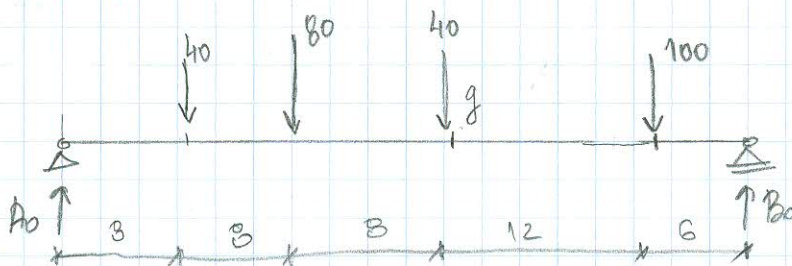


$$1) \tan \alpha = \frac{3}{42} = \frac{1}{14}$$

$$f = \frac{8 - 24 \cdot \frac{1}{14}}{7} = \frac{44}{7}$$



2) (A_0, B_0, H) - ODGOVARAJUĆA PROSTA GREDA OD SPOLYAŠNJE LITICAJA



$$A + A' = A_0$$

$$M_{g,0} + H \cdot f = 0$$

A_0 i spoljašnje opt.

$$\sum M_B = 0 \quad A_0 \cdot 42 - 40 \cdot 34 - 80 \cdot 26 - 40 \cdot 18 - 100 \cdot 6 = 0$$

$$A_0 = 113,3^\circ$$

$$\sum V = 0 \quad A_0 - 40 - 80 - 40 - 100 + B_0 = 0$$

$$B_0 = 146,6^\circ$$

$$M_{g,0} = 113,3^\circ \cdot 24 - 40 \cdot 16 - 80 \cdot 8 = 1439,9^\circ$$

$$H = -\frac{M_{g,0}}{f} = -\frac{1439,9^\circ}{44/7} = -229,09$$