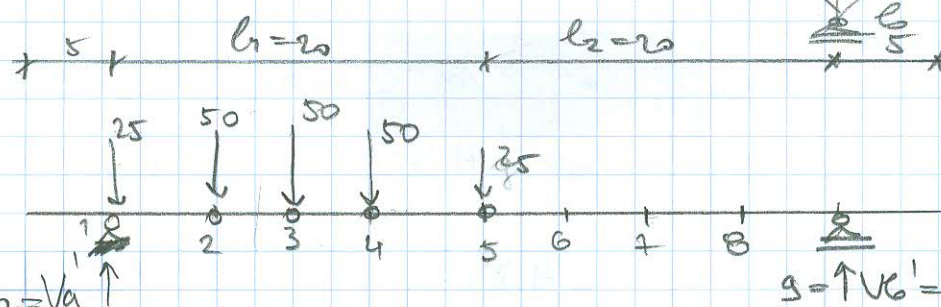
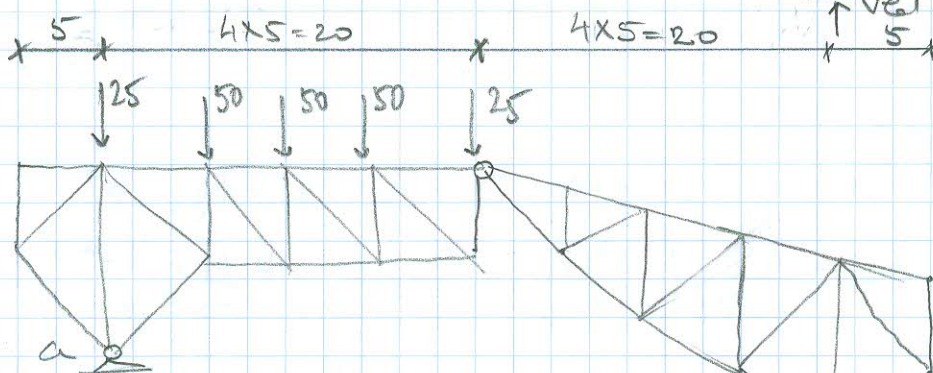
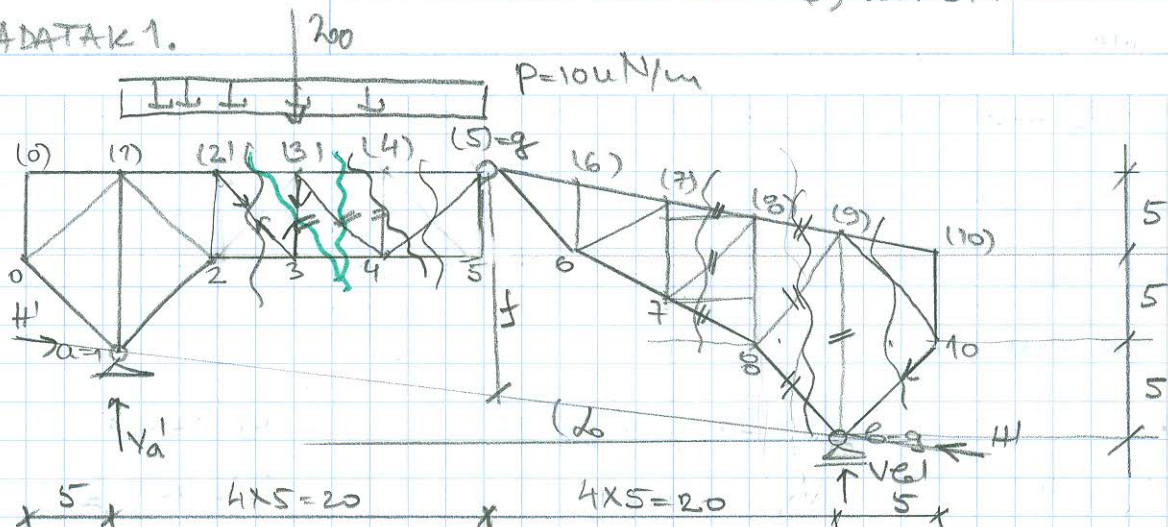


# UTICAJNE LINIJE

a) odrediti sile u preseku  
b) konst. u.l.

ZADATAK 1.



$$\sum M_a = 0 \quad V_b' \cdot 40 - 25 \cdot 20 - 50(5+10+15) = 0 \quad V_b' = 50$$

$$\sum V = 0 \quad -200 + V_a' + V_b' = 0 \quad V_a' = 150$$

$$\sum M_g = 0 \quad M_{g,0} - H \cdot f = 0 \quad M_{g,0} = 20 \cdot 50 = 1000 \text{ uNm}$$

$$\tan \alpha_0 = \frac{5}{40} = \frac{1}{8} \quad f = 15 - 20 \cdot \frac{1}{8} = 12,5$$

$$H = \frac{M_{g,0}}{f} = \frac{1000}{12,5} = 80 \text{ uN}$$

$$M_{2,0} = 625 \quad M_{7,0} = 500$$

$$M_{3,0} = 1000 \quad M_{8,0} = 250$$

$$M_{4,0} = 1125 \quad M_{9,0} = 0$$

$$M_{5,0} = 1000$$