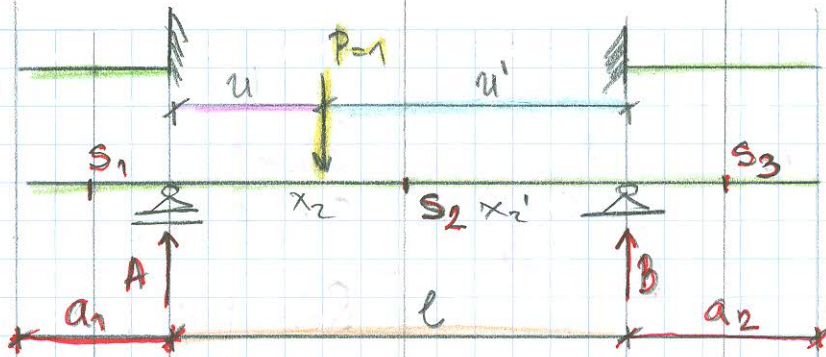


GREDA SA PREPUSTOM

47. str. plawa

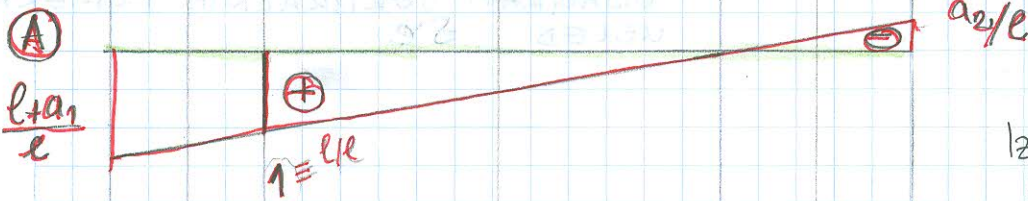


$$-a_1 \leq u \leq l + a_2$$

$$-a_2 \leq u' \leq l + a_1$$

$$\sum M_B = 0$$

$$A \cdot l - P \cdot u' = 0 \quad A = \frac{u'}{l}$$



IZNAD OSLOKACA
M JE NULA

