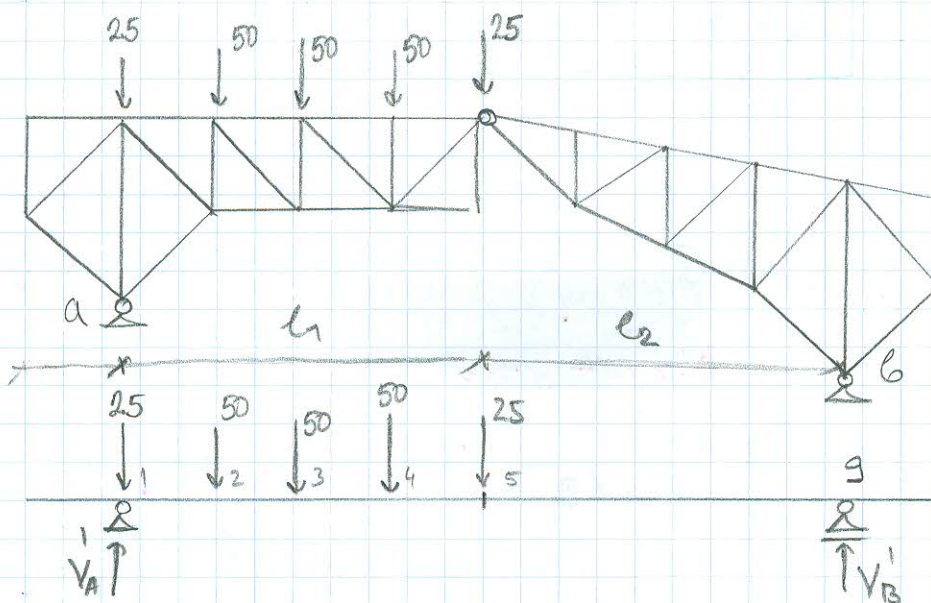
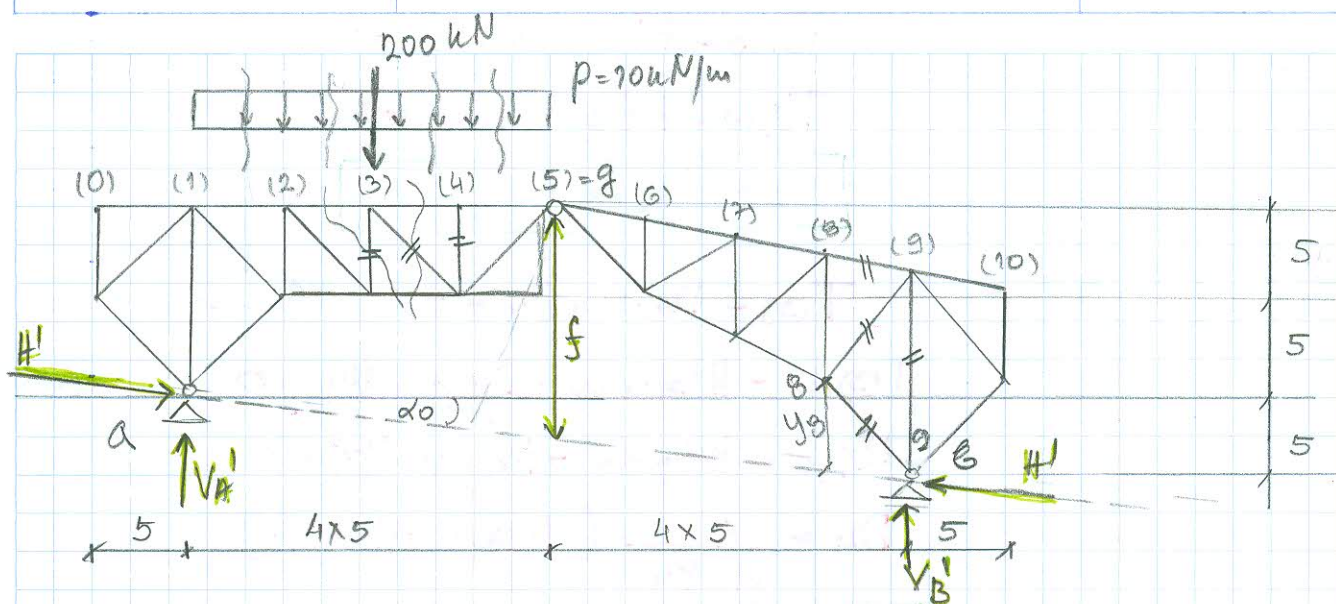


# ZADATOK 1.



$$\tan \alpha_0 = \frac{5}{40} = \frac{1}{8}$$

$$f = 10 + \frac{5}{2} = 12,5$$

$$\sum M_a = 0 \rightarrow 200 \cdot 10 - V_B' \cdot 40 = 0$$

$$\sum V = 0 \quad V_A' + V_B' - 200 = 0$$

$$V_B' = 50$$

$$V_A' = 150$$

$$\sum M_g^d = 0 \quad V_B' \cdot 20 - H' \cdot f \cos \alpha_0 = 0$$

$$50 \cdot 20 - H' \cdot f = 0 \rightarrow H = 80 \text{ kN}$$